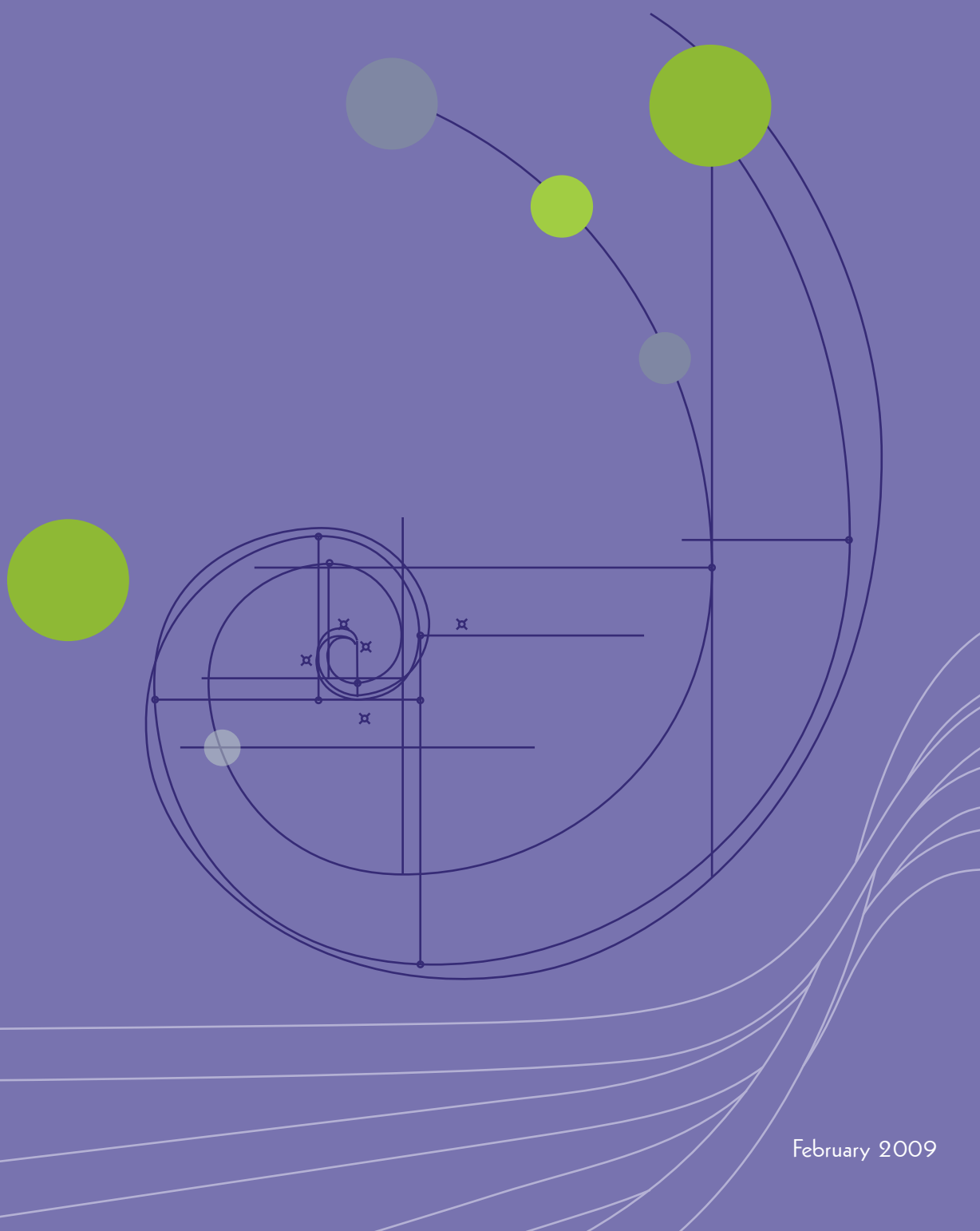


**ABERDEEN
CITY AND
SHIRE**

*Strategic Development
Planning Authority*

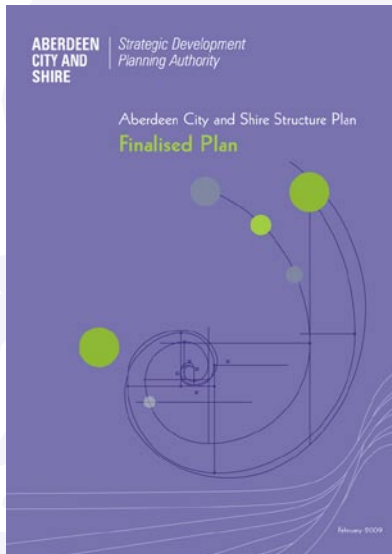
Finalised Structure Plan

Addendum to the Report of Survey



February 2009

Aberdeen City and Aberdeenshire (excluding the Cairngorms National Park) Structure Plan



Area covered by the
Aberdeen City and Shire
Structure Plan

The Finalised Structure Plan was submitted to Scottish Ministers on 27 February 2009. The following documents were published in support of the Finalised Plan and are available from the Strategic Development Planning Authority or can be downloaded from its website:

Appropriate Assessment

Publicity and Consultation Statement

Equalities and Human Rights Impact Assessment

Addendum to the Report of Survey

Addendum to the Strategic Environmental Assessment Environmental Report

Background Paper

Finalised Aberdeen City and Shire Structure Plan Addendum to the Report of Survey

1 Background

- 1.1 Aberdeen City and Aberdeenshire Councils formally started the preparation of a new structure plan for the area in February 2007. At the same time a 'Report of Survey' was published containing up-to-date information on the area in terms of its population and households, environment, economy, transport and housing.

2 Purpose

- 2.1 A draft structure plan was published for consultation in June 2008 and the finalised structure plan was submitted to Scottish Minister on 27 February 2009. However, the period February 2007 – February 2009 (the period between the publication of the Report of Survey and the finalised structure plan, a number of pieces of more up-to-date information have become available.
- 2.2 This 'Addendum to the Report of Survey' provides an update to that information base in the form of 28 replacement tables and figures.

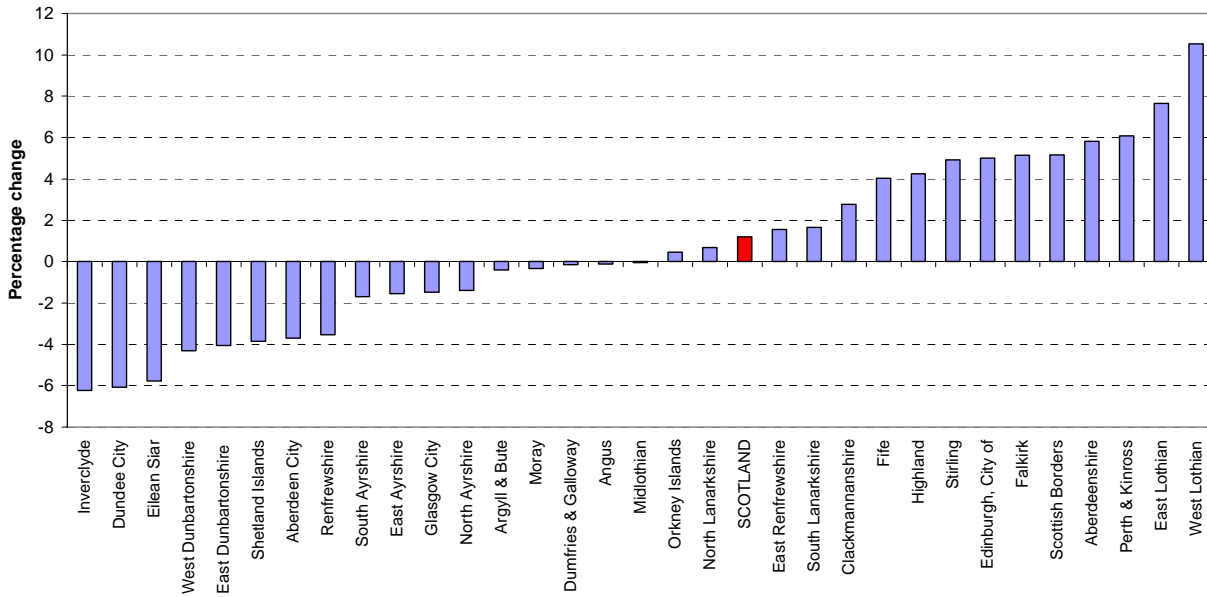
3 Format

- 3.1 This publication includes a number of tables and figures which replace those in the original publication. Where a table or figure has been replaced, this is clearly cross-referenced in the text.
- 3.2 The document follows the same structure as the original Report of Survey, covering:
 - (2) Population, households and where they live;
 - (3) Environment;
 - (4) Economy; and
 - (6) Housing.

Chapter 2: Population, households and where they live

1. Replace Figure 2a (page 5)

Figure 2a – Percentage change in population, Council areas, 1997-2007



Source: GRO(S) – Mid-2007 Population Estimates Scotland

2. Replace Table 2a (page 5)

Table 2a(i) – Population forecasts (2006 to 2031), low scenario

	2006	2011	2016	2021	2026	2031	% Change 2006/2031
Aberdeen City and Shire	443,140	443,830	443,369	442,272	439,374	433,693	-2.1
Aberdeen City	206,880	206,858	206,446	204,991	201,822	197,284	-4.6
Aberdeenshire	236,260	236,972	239,923	237,281	237,553	236,409	0.1

Table 2a(ii) – Population forecasts (2006 to 2031), probable case

	2006	2011	2016	2021	2026	2031	% Change 2006/2031
Aberdeen City and Shire	443,140	456,000	462,000	464,000	462,000	457,000	3.1
Aberdeen City	206,880	212,000	215,000	214,000	212,000	210,000	1.5
Aberdeenshire	236,260	244,000	247,000	250,000	250,000	247,000	4.5

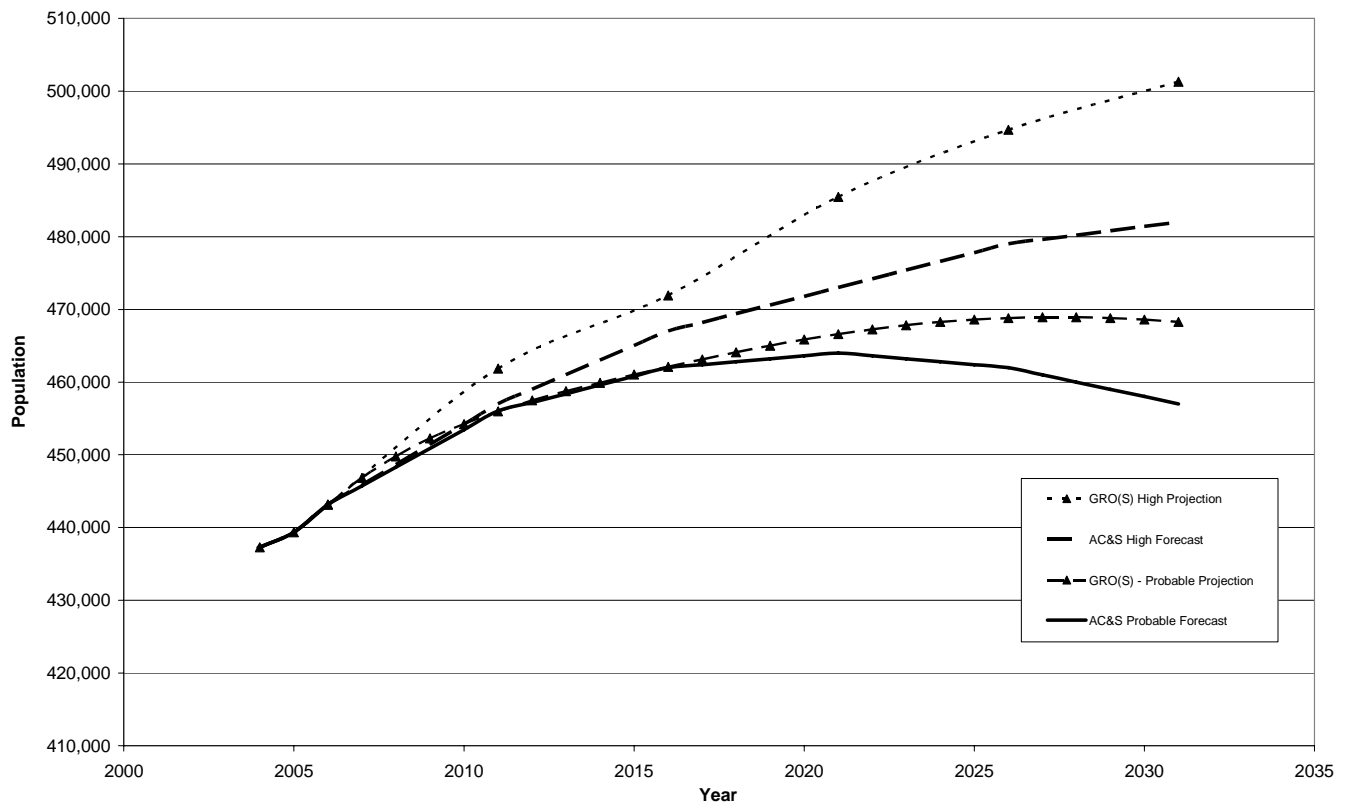
Table 2a(iii) – Population forecasts (2006 to 2031), high scenario

	2006	2011	2016	2021	2026	2031	% Change 2006/2031
Aberdeen City and Shire	443,140	457,000	467,000	473,000	479,000	482,000	8.7
Aberdeen City	206,880	212,000	215,000	217,000	219,000	220,000	6.3
Aberdeenshire	236,260	245,000	252,000	256,000	260,000	262,000	10.9

Source: Aberdeen City and Shire Strategic Forecasts 2006-2031

3. Replace Figure 2b (page 6)

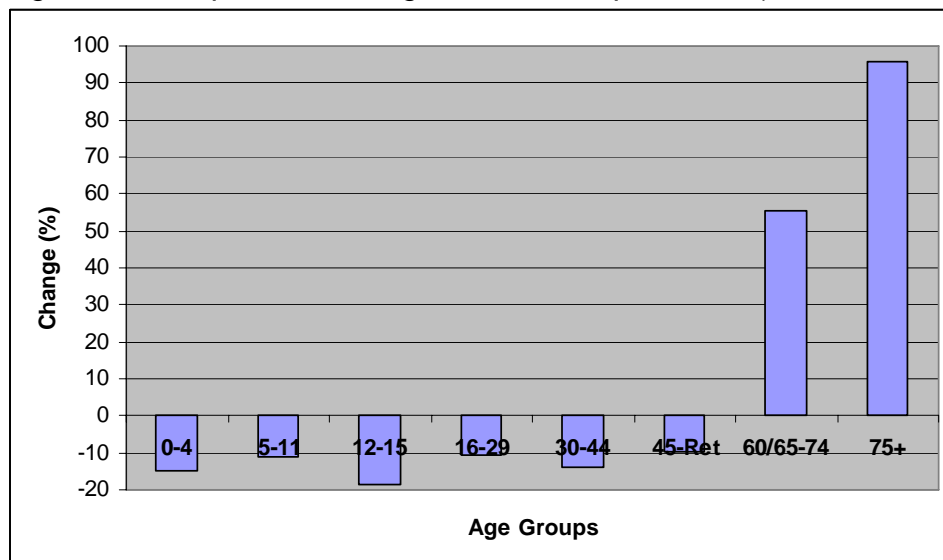
Figure 2b – Population estimates, forecasts and projection for the structure plan area (1981 to 2024)



Source: Aberdeen City and Shire Strategic Forecasts 2006-2031
GRO(S) – Population Projections Scotland (2006 based)

4. Replace Figure 2c (page 6)

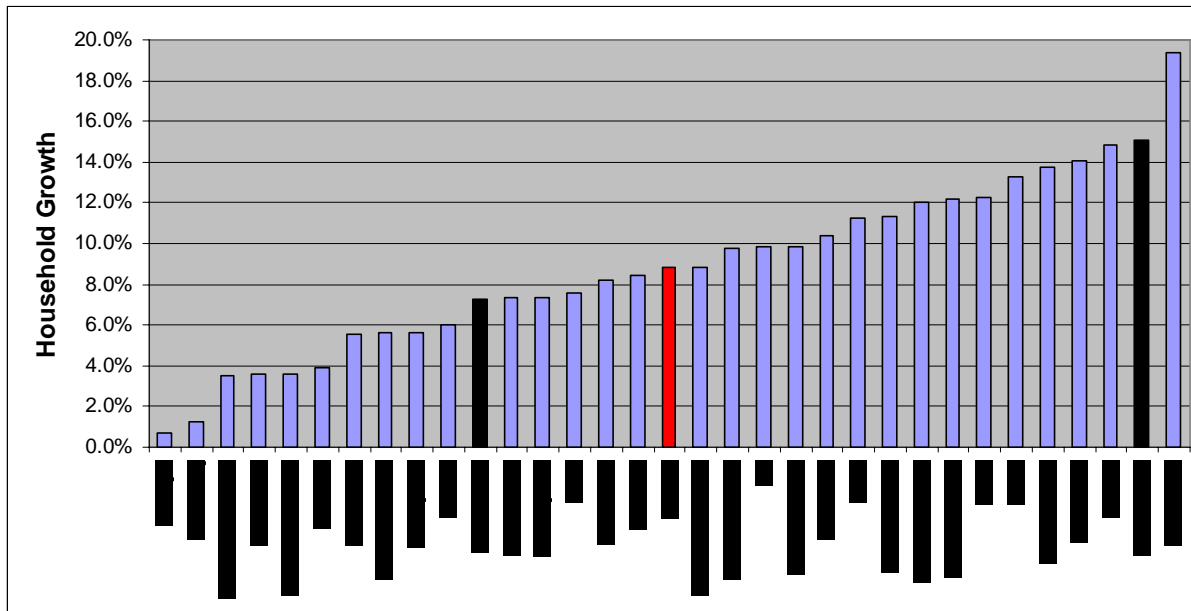
Figure 2c – Population change in structure plan area (2006 to 2031)



Source: Aberdeen City and Shire Strategic Forecasts 2006-2031

5. Replace Figure 2d (page 7)

Figure 2d – Household growth in Scottish local authorities (1996 to 2007)



Source: GRO(S) – Household estimates for Scotland, 2007

6. Replace Table 2b (page 7)

Table 2b(i) – Household forecasts (2006 to 2031), low scenario

	2006	2011	2016	2021	2026	2031	Change 2006/2031
Aberdeen City & Shire	199,510	206,529	212,704	217,731	222,004	224,252	+24,742
Aberdeen City	100,740	105,696	108,722	110,397	111,898	112,686	+11,946
Aberdeenshire	98,770	100,833	103,982	107,334	110,106	111,566	+12,796

Table 2b(ii) – Household forecasts (2006 to 2031), probable case

	2006	2011	2016	2021	2026	2031	Change 2006/2031
Aberdeen City & Shire	199,510	211,510	222,040	229,250	234,160	237,660	+38,150
Aberdeen City	100,740	106,800	112,470	114,730	115,850	117,210	+16,470
Aberdeenshire	98,770	104,710	109,570	114,520	118,310	120,450	+21,680

Table 2b(iii) – Household forecasts (2006 to 2031), high scenario

	2006	2011	2016	2021	2026	2031	Change 2006/2031
Aberdeen City & Shire	199,510	211,885	223,930	233,065	241,811	249,082	+49,572
Aberdeen City	100,740	106,797	112,468	116,226	119,585	122,643	+21,903
Aberdeenshire	98,770	105,088	111,462	116,839	122,226	126,439	+27,669

Source: Aberdeen City and Shire Strategic Forecasts 2006-2031

7. Replace Table 2c (page 8)

Table 2c – Forecast household size (2006 to 2031)

	2006	2011	2016	2021	2026	2031
Aberdeen City & Shire	2.18	2.12	2.04	1.99	1.94	1.89
Aberdeen City	2.00	1.93	1.86	1.82	1.78	1.74
Aberdeenshire	2.36	2.30	2.23	2.16	2.09	2.03

Source: Aberdeen City and Shire Strategic Forecasts 2006-2031

8. Replace Table 2d (page 9)

Table 2d – Forecast change in how households are made up in the structure plan area (2006 to 2031) – probable case

Type of household	Change 2006 to 2031
1 adult	+36,710
2 or more adults	+6,780
1 adult with children	+4,550
2 or more adults with children	-9,890
Total Households	+38,150

Source: Aberdeen City and Shire Strategic Forecasts 2006-2031

9. Replace Table 2e (page 10)

Table 2e – Scottish Government classification of urban and rural areas (using eight categories)

Category	Definition	Aberdeen City	Aberdeenshire
1. Large urban areas	Settlements of over 125,000 people.	92.9%	0.0
2. Other urban areas	Settlements of 10,000 to 125,000 people.	0.0	26.1%
3. Accessible small towns	Settlements of between 3,000 and 10,000 people and within 30 minutes drive of a settlement of 10,000 or more.	5.5%	9.8%
4. Remote small towns	Settlements of between 3,000 and 10,000 people and with a drive time of between 30 and 60 minutes to a settlement of 10,000 or more.	0.0	11.2%
5. Very remote small towns	Settlements of between 3,000 and 10,000 people and with a drive time of over 60 minutes to a settlement of 10,000 or more.	0.0	0.0
6. Accessible rural areas	Settlements of fewer than 3,000 people and within 30 minutes drive of a settlement of 10,000 or more.	1.6%	36.7%
7. Remote rural areas	Settlements of fewer than 3,000 people and with a drive time of between 30 and 60 minutes to a settlement of 10,000 or more.	0.0	14.7%
8. Very remote rural areas	Settlements of fewer than 3,000 and with a drive time of over 60 minutes to a settlement of 10,000 or more.	0.0	1.3%

Source: Scottish Government Urban Rural Classification 2007-2008

Chapter 3: Environment

10. Replace Table 3j (page 23)

Table 3j – Municipal Solid Waste and Biological Municipal Waste generated and landfill in the North East (tonnes per annum), October 2007 – September 2008

	MSW arisings	MSW landfilled	BMW landfilled
Aberdeen City	139,646	108,325	67,854
Aberdeenshire	153,924	103,952	69,674
Total	293,570	212,277	137,528

Source: SEPA (Landfill Allowance Scheme Rolling Year Data)

11. Replace Table 3k (page 25)

Table 3k – Recycle rates in Scotland (October 2007 – September 2008)

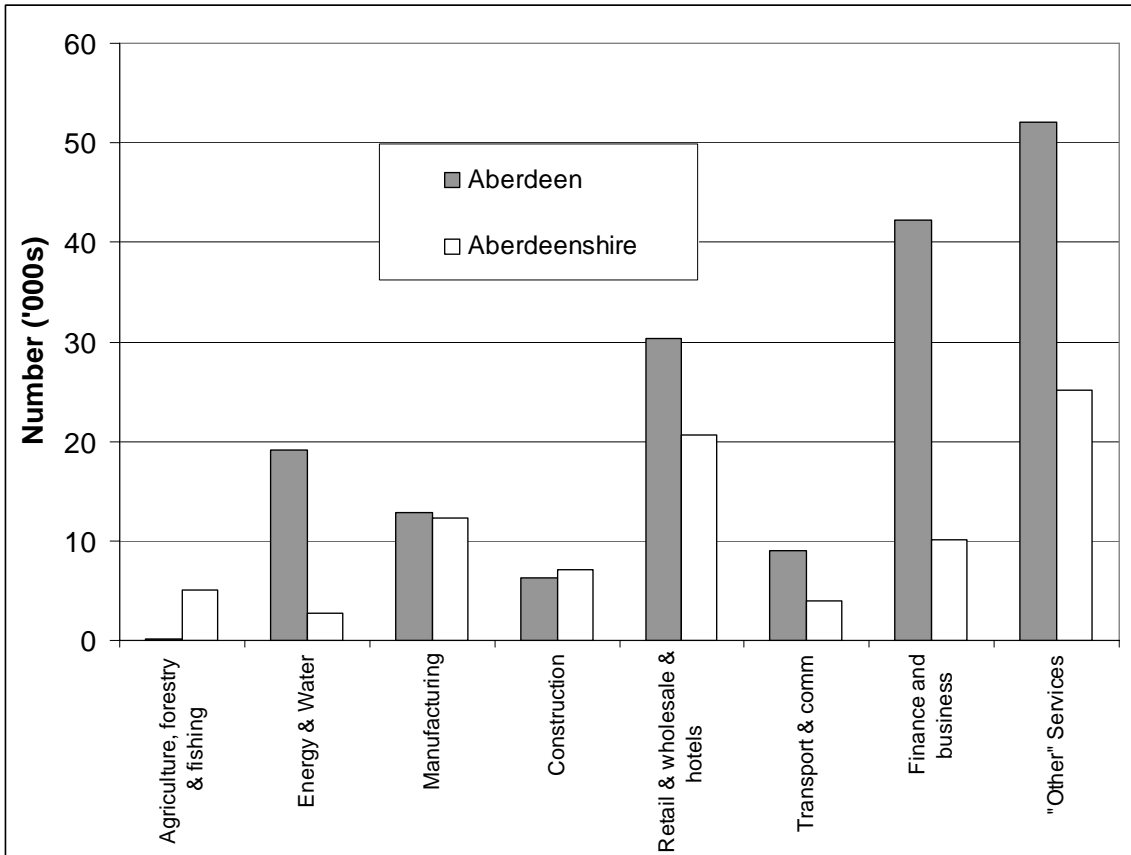
	% MSW Recycled / Composted
Clackmannanshire	43.8
Moray	43.3
East Ayrshire	42.7
Fife	41.3
South Ayrshire	40.3
Stirling	39.7
Falkirk	38.9
West Lothian	38.2
East Lothian	38.0
East Renfrewshire	36.6
Midlothian	36.4
Perth & Kinross	36.0
South Lanarkshire	35.9
Dundee City	35.3
North Lanarkshire	35.3
Dumfries & Galloway	35.1
Angus	34.9
Argyll & Bute	34.9
Scottish Borders	34.5
North Ayrshire	33.2
Scotland	32.9
Aberdeenshire	32.5
West Dunbartonshire	32.5
Highland	32.2
East Dunbartonshire	31.4
Renfrewshire	29.8
Orkney Islands	29.7
Edinburgh, City of	28.4
Inverclyde	24.2
Aberdeen City	22.4
Shetland Islands	21.5
Glasgow City	19.1
Eilean Siar	18.9

Source: SEPA Landfill Allowance Scheme – Rolling Year Data

Chapter 4: Economy

12. Replace Figure 4a (page 30)

Figure 4a – Number of employees by employment sector in the north east (2007)



Source: Scottish Government, <http://www.scotland.gov.uk/Resource/Doc/933/0023401.xls>
<http://www.scotland.gov.uk/Resource/Doc/933/0023403.xls>

13. Replace Table 4 (page 31)

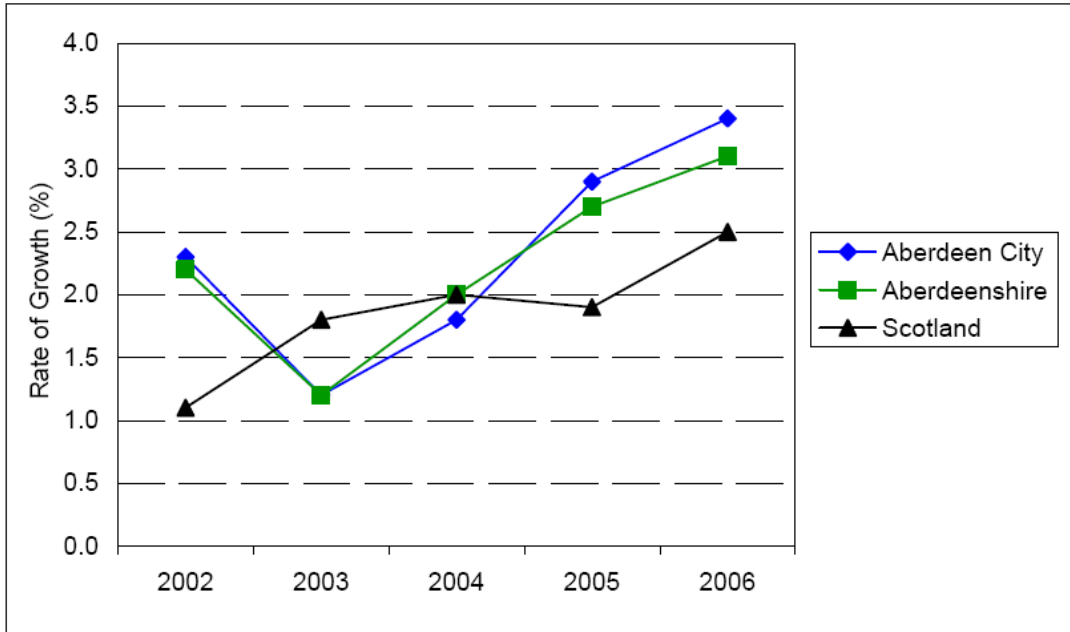
Figure 4a – Number of employees by employment sector in the north east (2007)

Industrial group	Aberdeen City		Aberdeenshire		Scotland	
	No. (000s)	Percentage	No. (000s)	Percentage	No. (000s)	Percentage
Agriculture, forestry & fishing	0.2	0%	5.1	6%	39.2	2%
Energy & Water	19.2	11%	2.7	3%	42.5	2%
Manufacturing	12.8	7%	12.3	14%	220.9	9%
Construction	6.3	4%	7.1	8%	137.6	6%
Retail & wholesale & hotels	30.3	18%	20.6	24%	528.7	22%
Transport & comm	9.0	5%	3.9	4%	130.3	5%
Finance and business	42.3	25%	10.1	12%	451.5	19%
"Other" Services	52.1	30%	25.2	29%	856.9	36%
All industries	172.1	100%	87.1	100%	2,407.7	100%

Source: Scottish Government, <http://www.scotland.gov.uk/Resource/Doc/933/0023401.xls>
<http://www.scotland.gov.uk/Resource/Doc/933/0023403.xls>

14. Replace Figure 4g (page 38)

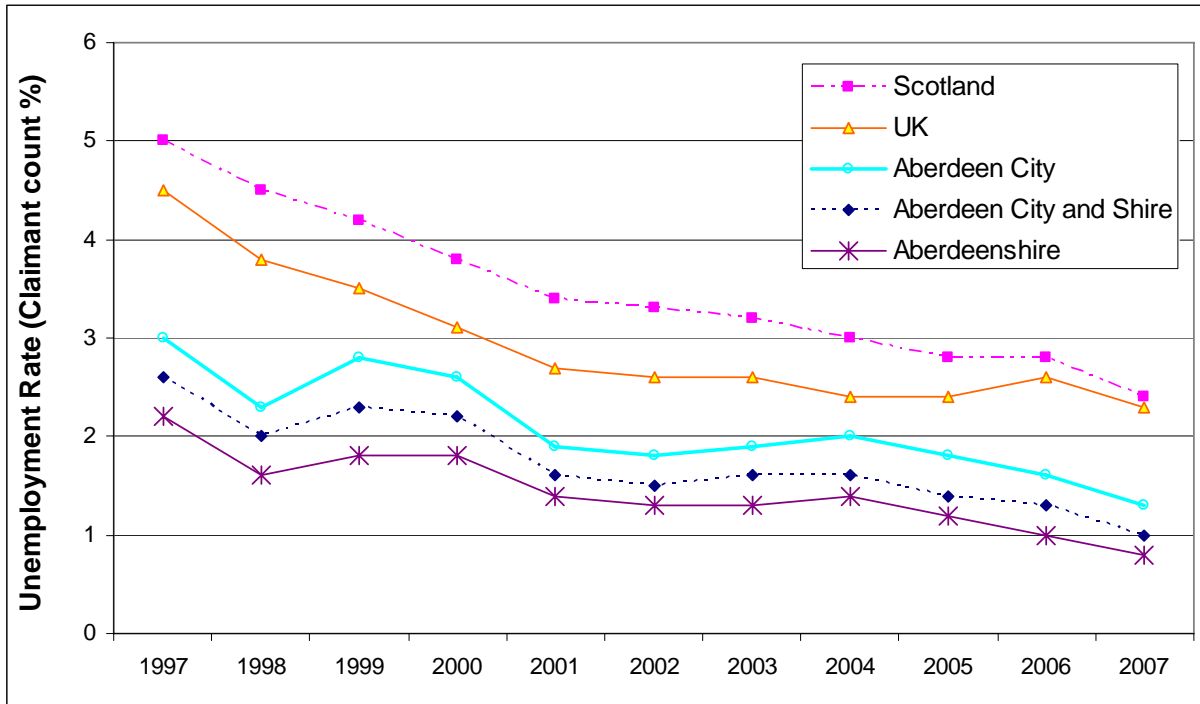
Figure 4g – Annual GDP growth Aberdeen, Aberdeenshire & Scotland (2002-2006)



Mackay Consultants, Estimates of Local Economic Output in Scotland, 2006

15. Replace Figure 4h (page 39)

Figure 4h – Unemployment (people claiming benefits) 1997 to 2007



Source: Nomisweb (2007)

16. Replace Table 4e (page 39)

Table 4e – Average earnings for Aberdeen City and Aberdeenshire (2006)

2006	Average Gross Weekly Earnings	Full-time	Part-time
Aberdeen City and Shire	£432.22	£548.99	£159.16
Aberdeen City	£437.20	£548.70	£163.50
Aberdeenshire	£427.20	£549.30	£155.10
Scotland	£412.10	£502.50	£170.00

Source: North East Scotland Economic Review 2007

17. Replace Table 4g (page 42)

Table 4g – Employment land supply in Aberdeen City (2008)

	Total Land	Marketable	Constrained
Altens	0	0	0
Loirston	5.7	5.7	0
Moss-side/Cairnrobin	9.8	9.8	0
Peterseat, Altens	8.4	8.4	0
Altens East/Doonies	12.1	9.2	2.9
Science and Energy Park, Bridge of Don	7.9	0	0
Science and Technology Park, Bridge of Don	3.6	0	0
Findlay Farm, Murcar	14	0	14
Berryhill, Murcar	54.4	0	54.4
Airport South West, Dyce	87.0	0	87.0
Dyce Drive	5.2	5.2	0
Kirkhill, Dyce	0	0	0
Pitmedden Road East, Dyce	0	0	0
Raiths, Dyce	2.8	2.8	0
Stoneywood Technology Park	12.6	0	12.6
Wellheads West, Dyce	1.3	1.3	0
TOTAL	188.8	42.4	170.9

Note: All figures are net hectares

Source: Employment Land Audit 2008

18. Replace table 4f (page 41)

Table 4f- Summary of Employment Land Supply (2008)

	Total Land (Ha)	Marketable (Ha)	Constrained (Ha)
Aberdeen City	225	42	171
Aberdeenshire	371	231	140
Total	596	273	311

Source: Housing Land Audit 2008

19. Replace table 4h (page 43)

Table 4h – Employment land supply in Aberdeenshire (2008)

Location	Total Land	Marketable	Constrained
Aberchirder	1.0	1.0	0
Fraserburgh	14.2	3.2	11.0
Inverboyndie	2.8	2.8	0
Macduff	12.3	6.9	5.4
Longside	1.8	0	1.8
Mintlaw	5.3	2.2	3.1
Peterhead	72	54.6	17.4
Balmedie	7.9	7.3	0.6
Cuminestown	0.5	0	0.5
Ellon	13.2	13.2	0
Fyvie	0.2	0.2	0
Newburgh	3.2	3.2	0
Oldmeldrum	11.4	7.9	3.5
Pitmedden	2.3	1.4	0.9
Rothienorman	1.2	0	1.2
Tarves	1.7	1.7	0
Turriff	6.2	4.6	1.6
Belhelvie	4.5	0	4.5
Street of Monteach	1.1	1.1	0
Blackburn	1.0	0	1.0
Insch	6.5	4.3	2.2
Inverurie	15.4	5.6	9.8
Kemnay	4.6	2.2	2.4

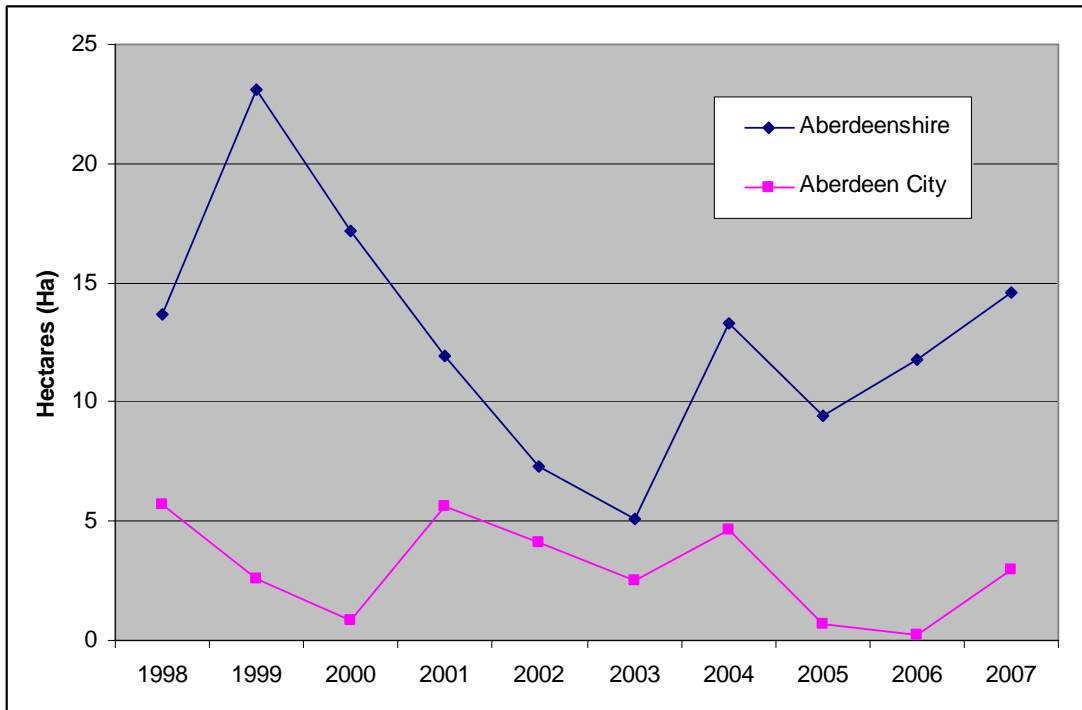
Kingseat	1.4	1.4	0
Kintore	15.4	10.9	4.5
Port Elphinstone	9.2	7.4	1.8
Westhill	6.4	6.4	1.8
Millbank	1.8	0	1.8
Aboyne	3.7	3.7	0
Alford	2.9	0.9	2.0
Ballater	0.4	0.4	0
Banchory	12.4	12.4	0
Huntly	6.9	6.9	0
Tarland	1.3	1.3	0
Torphins	1.3	1.3	0
Muir of Fowlis	0.3	0.3	0
Rhynie	0.8	0.8	0
Kincardine O'Neil	0.5	0.5	0
Lumsden	0.3	0.3	0
Whitehouse	0.8	0.8	0
Gourdon	2.8	2.8	0
Inverbervie	0.8	0.8	0
Laurencekirk	9.1	0.9	8.2
Newtonhill	7.2	7.2	0
Portlethen	83.9	28.9	51.1
Stonehaven	11.3	11.3	0
TOTAL	371.2	231	138.1

Note: All figures are net hectares

Source: Employment Land Audit 2008

20. Replace Figure 4j (page 44)

Figure 4j – Employment land take up (1998-2007)



21. Replace Table 4j (page 48)

Table 4j – Multiple deprivation in north east Scotland

	No. of data zones in most deprived:			
	5% in Scotland	10% in Scotland	15% in Scotland	20% in Scotland
Aberdeen City				
Number	9	18	27	36
Population	5,797	11,749	18,027	24,715
% Total Popn*	2.8%	5.6%	8.6%	11.8%
Aberdeenshire				
Number	2	2	6	8
Population	1,629	1,629	4,353	5,945
% Total Popn*	0.7%	0.7%	1.8%	2.5%
NE Scotland				
Number	11	20	33	44
Population	7,426	13,378	22,380	30,660
% Total Popn*	1.7%	3.0%	5.0%	6.8%

* Based on 2007 population estimate

Source: Scottish Index of Multiple Deprivation (2006)

22. Replace Table 4k (page 50)

Table 4k – Educational achievement in the north east and Scotland

	Aberdeen City	Aberdeenshire	Scotland
NVQ Level 4 and above [HND, Degree or Higher Degree]	40.0%	31.9%	33.2%
NVQ Level 3 and above [Two or more Highers or Advanced Highers / A-Levels]	55.9%	52.4%	51.7%
NVQ Level 2 and above [Five or more Standard Grades (Credit level) / GCSE's (Grades A-C)]	71.8%	72.3%	68.9%
NVQ Level 1 and above [Less than five Standard Grades (Credit level) / GCSE's (Grades A-C)]	81.4%	84.5%	79.2%
Other Qualifications	7.9%	6.7%	7.3%
No Qualifications	10.7%	8.8%	13.5%

Source: Nomisweb (Local Authority Profiles, September 2007)

Chapter 6: Housing

23. Replace Table 6a (page 70)

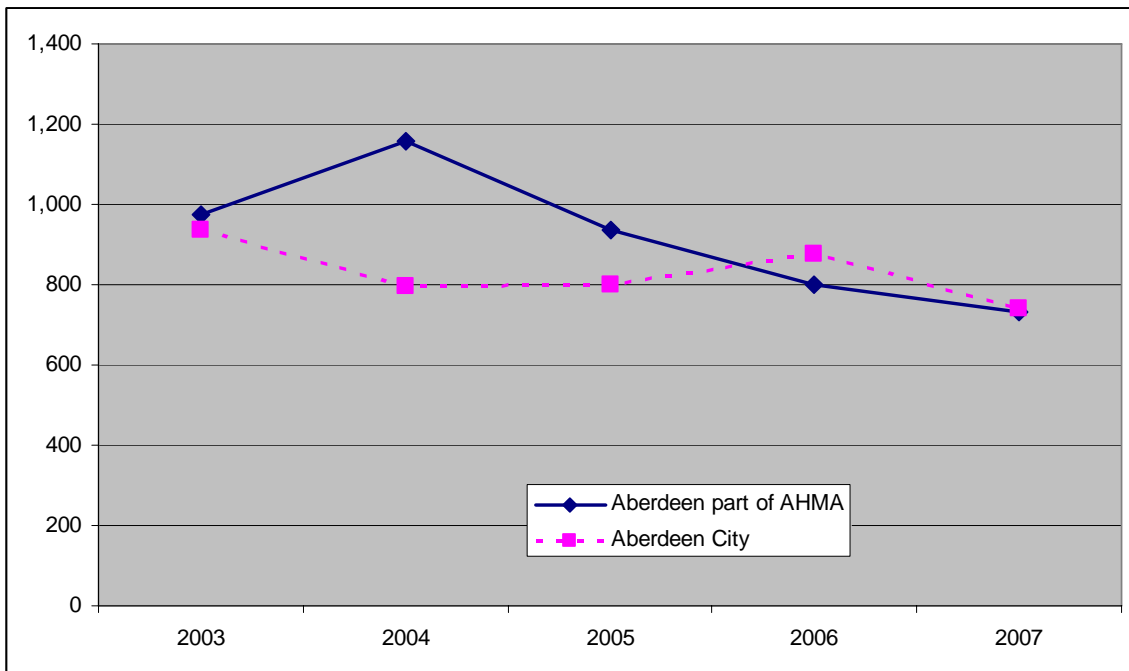
Table 6a- New homes built

Housing Completions						
Housing Market Area	Actual					
	2003	2004	2005	2006	2007	Average
Aberdeen HMA	1,910	1,952	1,739	1,679	1,470	1,750
Rural HMA	379	541	439	554	643	511
Structure Plan Area	2,289	2,493	2,178	2,333	2,113	2,281

Source: Housing Land Audit 2008

24. Replace Figure 6d (page 72)

Figure 6d – New homes built in the Aberdeen housing market area by council area (2003-2007)



Source: Housing Land Audit 2008

25. Replace Table 6c (page 73)

Table 6c – Housing completed and land supply in Aberdeen and the main settlements in Aberdeenshire

	2003	2004	2005	2006	2007	Total (2003-07)	Average (2003--07)	Established	Effective (5yr)	Effective (prog)	Constrained
Aberdeen	935	795	801	878	739	4,148	830	2,369	1,796	213	360
Aboyne	18	3	3	6	4	34	7	285	233	52	-
Alford	14	14	-	14	30	72	14	281	226	55	-
Banchory	31	78	94	46	57	306	61	270	235	6	29
Banff and Macduff	22	9	15	1	2	49	10	479	106	76	297
Blackburn	57	70	102	115	113	457	91	41	41	-	-
Ellon	207	186	75	34	23	525	105	81	81	-	-
Fraserburgh	23	15	28	55	22	143	29	472	157	-	315
Huntly	5	-	1	6	33	45	9	357	96	-	261
Insch	5	48	32	21	62	168	34	233	208	-	25
Inverurie	75	151	118	96	97	537	107	1,296	901	350	45
Kintore	137	220	131	140	60	688	138	387	96	-	291
Laurancekirk	11	75	41	46	59	232	46	326	326	-	-
Mintlaw	1	2	2	1	17	23	5	218	118	10	90
Oldmeldrum	1	17	64	80	56	218	44	204	204	-	-
Peterhead	27	47	30	60	113	277	55	793	479	228	86
Portlethen	11	16	7	5	2	41	8	870	530	340	-
Stonehaven	124	84	24	5	10	247	49	115	95	-	20
Turriff	20	26	11	33	49	139	28	240	130	20	90
Westhill	110	92	113	43	56	414	83	541	541	-	-
Total Main Settlements	1,834	1,948	1,692	1,685	1,604	8,763	1,753	9,858	6,599	1,350	1,909
Other areas	455	545	486	548	509	2,543	509	4,367	3,078	79	1,210
Total	2,289	2,493	2,178	2,233	2,113	11,306	2,261	14,225	9,677	1,429	3,119
Percentage Main Settlements	80%	78%	78%	75%	76%	78%	78%	69%	68%	94%	61%

26. Replace Table 6e (page 75)

Table 6e –Housing rates by Scottish local authorities

Local Authority	Estimated household (2007)	New home completions (2007)	New homes as a percentage of households
Highland	98048	1806	1.8%
Clackmannanshire	22316	384	1.7%
Glasgow City	280425	4582	1.6%
Scottish Borders, The	50705	740	1.5%
Orkney	8982	131	1.5%
Aberdeenshire	100191	1445	1.4%
West Lothian	71351	1012	1.4%
East Ayrshire	52376	705	1.3%
Shetland	9498	127	1.3%
Moray	38521	497	1.3%
Eilean Siar	11706	149	1.3%
North Ayrshire	61044	715	1.2%
Aberdeen City and Shire	202386	2293	1.1%
East Lothian	41240	467	1.1%
SCOTLAND	2313778	25559	1.1%
South Lanarkshire	134555	1455	1.1%
Angus	49565	535	1.1%
Perth & Kinross	63233	675	1.1%
North Lanarkshire	142431	1446	1.0%
Renfrewshire	78182	761	1.0%
Dumfries & Galloway	67282	637	0.9%
Stirling	37328	338	0.9%
Midlothian	33909	304	0.9%
Fife	158175	1406	0.9%
Edinburgh, City of	216524	1911	0.9%
Aberdeen City	102195	848	0.8%
Inverclyde	36588	300	0.8%
Falkirk	67379	540	0.8%
South Ayrshire	50883	397	0.8%
Dundee City	68278	466	0.7%
Argyll & Bute	41233	272	0.7%
East Dunbartonshire	42702	249	0.6%
West Dunbartonshire	41298	173	0.4%
East Renfrewshire	35636	86	0.2%

Sources: Scottish Executive Housing Trends, GRO(S) Household Estimates 2007

27. Replace Table 6f (page 75)

Table 6f – Housing land supply (2008)

	Established Land Supply	Effective (5yr) Land Supply	Effective (post 2010) Land Supply	Constrained
Aberdeen City	2,369	1,796	213	360
Shire (AHMA)	4,805	3,358	696	751
AHMA*	7,549	5,529	909	1,111
RHMA	6,676	4,148	520	2,008
Structure Plan Area	14,225	9,677	1,429	3,119

Source: Aberdeen City & Aberdeenshire Councils – 2008 Housing Land Audit

28. Replace Table 6f (page 76)

Table 6f - Established Land Supply on Greenfield and Brownfield Sites

	Greenfield	Brownfield
Aberdeen City	23%	77%
Aberdeenshire (AHMA)	88%	12%
AHMA	67%	33%
RHMA	89%	11%
Structure Plan Area	77%	23%

Source: Aberdeen City & Aberdeenshire Councils – 2008 Housing Land Audit

If you wish to object to this plan you must do so by 24 April 2009 in writing to the Scottish Ministers at the address below :

Sandra Carey
The Scottish Government
Directorate for the Built Environment
Area 2-H
Victoria Quay
Edinburgh
EH6 6QQ

Email: aberdeencityandshire@scotland.gsi.gov.uk

Forms are available from the Strategic Development Planning Authority (address below) or can be downloaded from its website.

If you need help reading this document (for example if you need it in a different format or in another language), please phone us on 01224 628210.

ভাষা/ইন্টারপ্ৰেটিং এবং অন্যান্য ফরমেটের
যোগাযোগ সাহায্যের জন্য দয়া করে
: 01224 628210
নম্বরে যোগাযোগ করবেন।

如果需要語言/傳譯及其他形式的傳訊支援服務，
請聯絡: 01224 628210。

Если требуется помощь при выборе
языка /переводчика или других
способов общения ,звоните по
телефону :01224 628210

للحصول على مساعدة بخصوص اللغة/ الترجمة
و وسائل الاتصال الأخرى، الرجاء الاتصال
بالرقم التالي: 01224 628210

Lai saņemtu palīdzību sakarā ar
valodu/tulkošanu un citiem iespējamem
komunikāciju atbalsta formātiem, lūdzu
zvanīt 01224 628210

Jei jus turite sunkumu su kalba/ vertimu
ar kitomis bendravimo formomis,
skambinkite 01224 628210

Jeśli potrzebujesz pomocy **językowej /
tłumacza** lub innej pomocy w
porozumiewaniu się, proszę zadzwonić
pod numer: 01224 628210

Aberdeen City and Shire Strategic Development Plan Team
Archibald Simpson House
27-29 King Street
Aberdeen
AB24 5AA

Phone: 01224 628210
Fax: 01224 640517
Website: www.aberdeencityandshire-sdpa.gov.uk
E-mail: team@aberdeencityandshire-sdpa.gov.uk



ABERDEEN
CITY COUNCIL

Aberdeenshire
COUNCIL

